

Art.No 22-51-00

The hydraulic lifter is meant to complete the functions of the platform. You can install different kind of Pensi platforms on the hydraulic lifter, depending on the stretcher you will use. By loading/unloading the platform can be drawn out of the vehicle.

Lifting functions are assisted by a hydraulic cylinder. These functions are also electrically controlled. The main fuse should be DC12V 70A or DC24V 35A.

The product fulfills the requirements of standard EN 1789.

Art. No 22-51-00 includes:

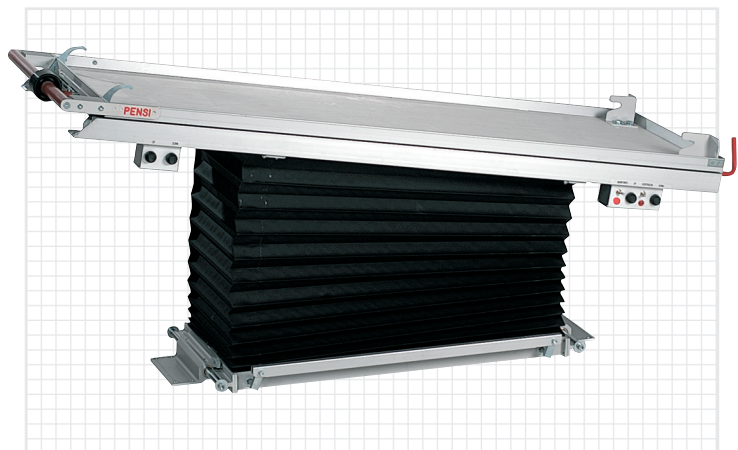
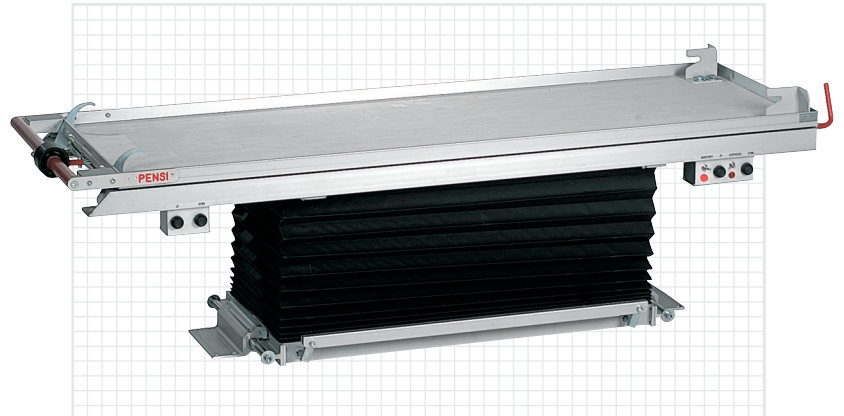
- Bellow to cover and protect the moving parts of the lifter
- Control panels on the both end of the platform and the following functions:
 - Sideway sliding (3 position, 220 mm)
 - Suspension
 - Shock position
 - Adjustable treatment height
- Manual use in case of electric malfunction

Option: Control panel on the wall/ceiling.

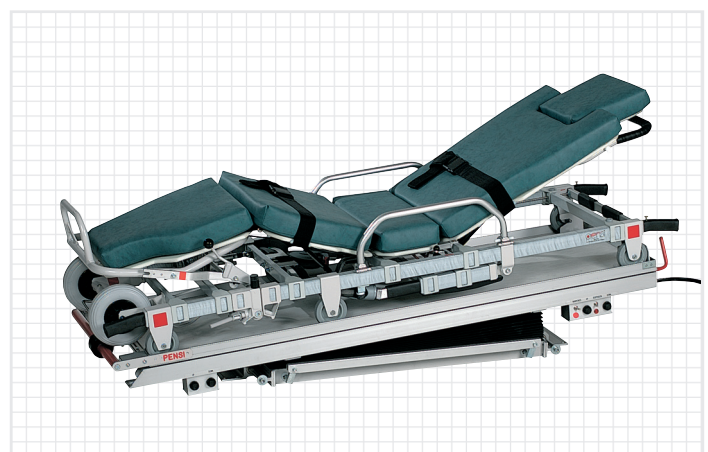
Technical details

Dimensions of the lifter (without the platform)

Length	1160 mm
Width	540 mm
Height	min 170 mm, max 480 mm
Weight	60 kg
Loading capacity	250 kg



▲ Shock position 9°



▲ Hydraulic lifter with basic platform and Pensi 2000 MA stretcher